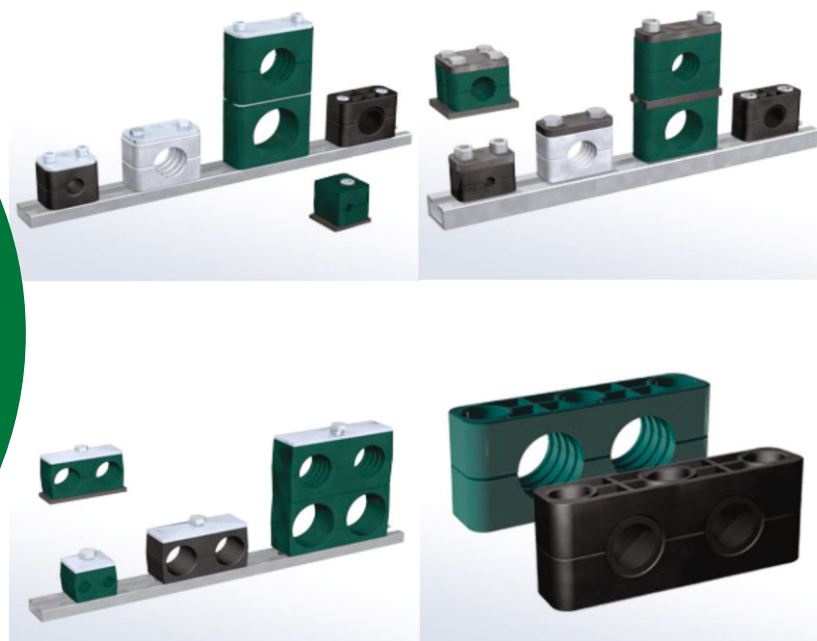


Hydro Pneumatic Accessories

The Complete Solution Provider...



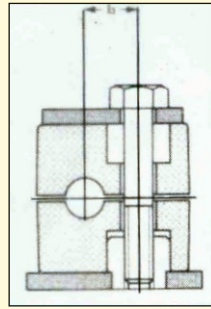
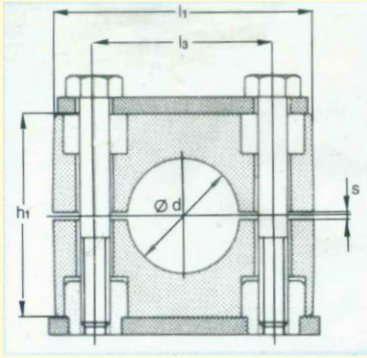
2, N.C. Dutta Sarani,
Shop No. 3, Sagar Estate
Kolkata- 700001

Pipe Clamps

Hydro Pneumatic Accessories pipe clamps are designed to assure a simple, reliable shock dampening support for hydraulic tubes, hydraulic pipes, hydraulic hoses and conduit in hydraulic piping systems. Hydraulic pipe clamps absorb shock, dampen vibration and reduce noise in hydraulic piping systems. We are pleased to offer the most comprehensive line of hydraulic pipe clamps from 1/4" tube up to 12" pipe. Our hydraulic pipe clamps are also offered in metric tube sizes. We can supply our hydraulic pipe clamps in a wide range of materials: Polypropylene (PP) is used for standard pipe clamps and Polyamide or Aluminium (AL) for special applications.

1. Standard Series according to DIN 3015, Part 1
2. Heavy Series according to DIN 3015, Part 2
3. Twin Series according to DIN 3015, Part 3
4. Heavy Twin Series
5. Construction Series
6. Heavy Saddles according to DIN 1592
7. Light Saddles according to DIN 1593
8. Light Saddles according to DIN 1596
9. Light Saddles according to DIN 1597

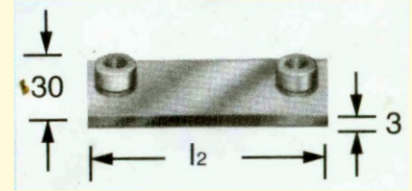
Hydro Pneumatic Accessories Clamps symbolise quick and easy pipe and hose installations as well as a clean distinct pipe layout. Apart from the technical sophistication of HPA Clamps, the second to-none delivery, prompt service even for special construction, HPA Clamps are also the most economical ones to install.



Hydro Pneumatic Accessories

The Complete Solution Provider...

Standard Series



For all other groups

For Group L1

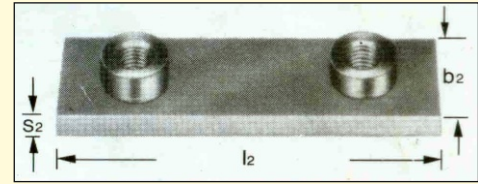
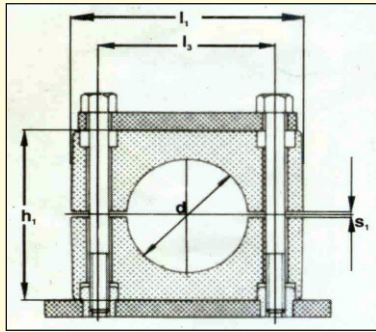
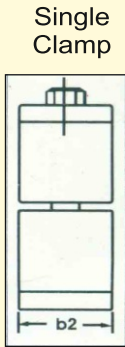
Clamp Size Dimensions (in mm)

Dia d			Group	Size No.	h1	l1	l3	S1	l2
mm	Nominal Bore	Inch O.D.							
6			L1	6	27	30	10	0.4	35
		1/4		6.4					
8		5/16		8					
		3/8		9.5					
	G1/8			10					
10			L2	12	27	35	20	0.6	40
12				6					
		1/4		6.4					
8		5/16		8					
		3/8		9.5					
10			L3	10	33	40	26	0.6	45
12				12.7					
	G1/4	1/2		13.5					
14				14					
15				15					
16		5/8	L4	16	35	48	33	0.6	53
18				17.2					
	G3/8			18					
20		3/4		19					
				20					
22			L5	21.3	42	57	40	0.6	62
25				22					
	G1/2	7/8		22					
		1		25					
				26.9					
28			L6	28	58	70	52	0.8	75
30				30					
	G3/4			32					
		1.1/4		33.7					
	G1			35					
35			L7	38	66	85	66	0.8	90
38				42					
42		1.1/2		44.5					
	G1. 1/4			48.3					
		1.3/4		50.8					
		2							

* Design and dimensions subject to change without prior notice for the sake of improvement



Hydro Pneumatic Accessories
The Complete Solution Provider...
Heavy Series



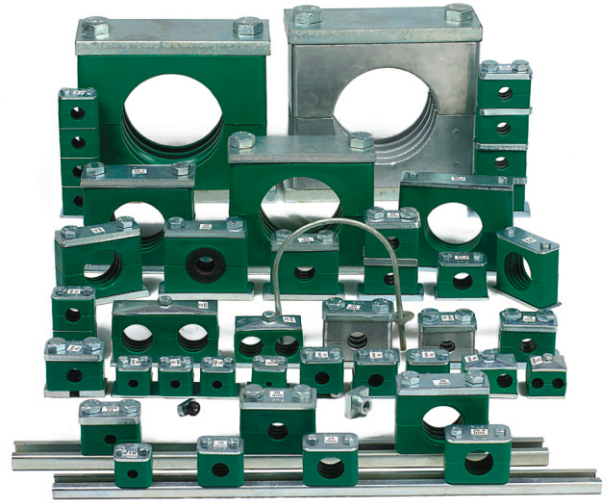
Clamp Size Dimensions (in mm)

Dia d			Group	Size No.	h1	l1	l3	s1
mm	Nominal Bore	Inch O.D.						
6		1/4	H1	6	32	55	33	1
				6.4				
8		3/8		8				
				9.5				
10	G1/8			10				
12		1/2		12				
				12.7				
				13.5				
				14				
14			15					
15		5/8	16					
16			17.2					
18	G3/8		18					
20		3/4	H2	19	48	70	45	1
				20				
				21.3				
22	G1/2	7/8		22				
25		1		25				
				26.9				
				28				
28			30					
30			30					
			32					
		1.1/4	H3	33.7	60	85	60	1
35	G1			35				
38		1.1/2		38				
40				40				
				42				
38		1.1/2	H4	42	90	115	90	2
42	G1.1/4			44.5				
		1.3/4		48.3				
				50.8				
		2		50.8				

Dia d			Group	Size No.	h1	l1	l3	s1
mm	Nominal Bore	Inch O.D.						
55		2.1/4	H4	55	90	115	90	2
				57				
	G2			60.3				
		2.1/2		63.5				
65			H5	65	120	152	122	3
				70				
65				65				
70				70				
65				65				
70				70				
73				73				
75				75				
	G2.1/2	3		76.1				
				80				
80		3.1/4	82.5					
			88.9					
	G3		H6	88.9	170	205	168	3
100				100				
	G3.1/2			102				
		4.1/4		108				
			H7	114	200	250	205	4
	G4			127				
		5		133				
		5.1/4		133				
				140				
140	G5		H8	152	270	320	265	4
		6		168				
	G6			216				
		8.1/2		219				
			H9	219	410	470	395	10
	G8			219				
	G10			273				
	G12			324				
			H10	356	530	630	535	30
	G14			406				
	G16			406				

Group	H1	H2	H3	H4	H5	H6	H7	H8	H9	H10
Length l2	73	85	100	140	180	225	270	340	520	680
Width b2	30	30	30	45	60	80	90	120	160	180
Thickness S2	8	8	8	10	10	15	15	25	30	30

* Design and dimensions subject to change without prior notice for the sake of improvement



Due to the extraordinary wide product range, all areas of Pipe, Tube and Hose installation are covered:

- Industrial Hydraulics
- Mobile Hydraulics
- Marine Hydraulics
- Offshore
- General Industrial Pipe Construction
- Mining Industry



Hydro Pneumatic Accessories

Stockist of Hydraulic Fittings, Valves, Pipe Clamps, Hose Pipe and accessories.

033 40244066 / 46032576
hpakolkata@gmail.com / sales@hpakolkata.com
www.hpakolkata.com